

LAB EXERCISE 13.3

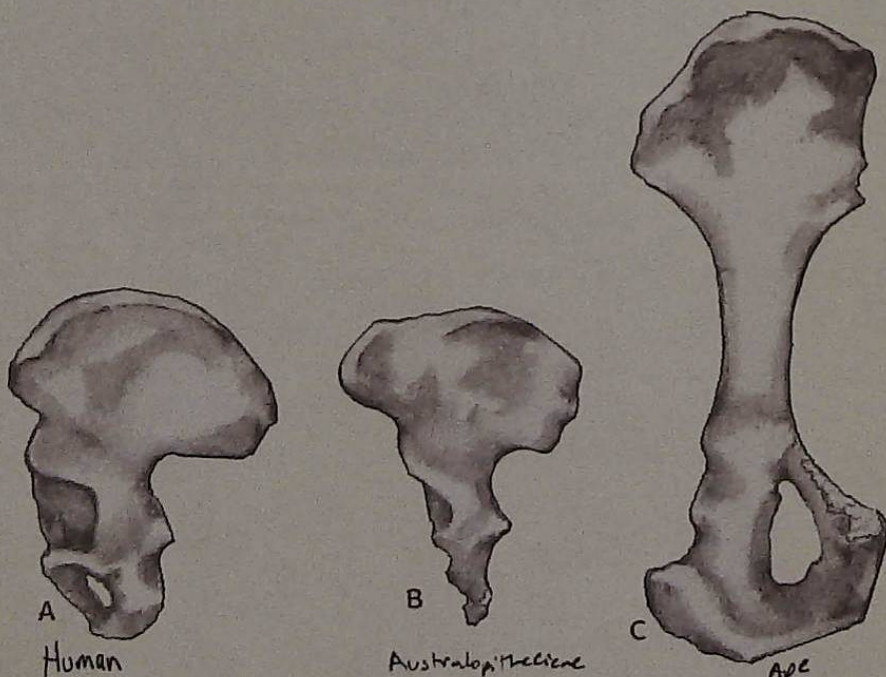
NAME _____

SECTION _____ DATE _____

1. Observe lab specimens and the photos in this and the previous lab exercise. Compare postcranial bones of *Australopithecus afarensis* (Lucy) to those of a chimpanzee and a human (*Atlas* p. 287, Figures 8.66, 8.67; br. ed. p. 59, Figures. 3.66, 3.77), and fill out the chart below. Answer from a comparative perspective. For example, for orientation of iliac blades, you might say, "more laterally placed" (for *A. afarensis* compared to a chimpanzee) and "slightly more posteriorly placed" (for *A. afarensis* compared to a human). See next page for *A. afarensis* proximal femur.

	A. AFARENSIS COMPARED TO A CHIMPANZEE	A. AFARENSIS COMPARED TO A HUMAN
Pelvis		
Ilium shape, length		
Orientation of iliac blades		
Size of anterior inferior iliac spine		
Femur		
Bicondylar angle?		
Orientation of femoral head, height of greater trochanter		
Size of linea aspera		

*In the absence of *A. afarensis* lab specimens and/or the *Atlas*, few features will be visible.



Comparison of innominate bone of (A) a human, (B) an australopithecine, and (C) an ape



A. afarensis pelvis, anterior view